



HOME of MAGNUM[®] BOARD

“The New Generation Building Material”

TECHNICAL BULLETIN No.:	090508-1545
Subject:	Backer Board and Underlayment Installation Specification by Mapei.
Issue Date:	September 2008
Issue No.:	2

1.0 PURPOSE

- 1.1 To provide a guideline for installing Magnum[®] Backer Board and Magnum[®] Underlayment Products.

2.0 GENERAL

- 2.1 Magnum Board[®] Products are installed in much the same manner as many other building products.
- 2.2 Mapei have developed this procedure to ensure your installation is done correctly and will provide years of trouble free service.

3.0 RESPONSIBILITY

- 3.1 It is the responsibility of the installer to ensure the framing to which the Magnum Board[®] products will be fastened to are adequate to provide the finished look desired by the owner and / or general contractor.
- 3.2 If problems exist, notify the owner / general contractor prior to the installation of Magnum[®] Backer Board and / or Magnum[®] Underlayment products.

4.0 MATERIAL REQUIREMENTS

- 4.1 Marshal or stage materials as close to the point of installation as possible.
- 4.2 Always store Magnum Board[®] materials flat and protect it from weather and jobsite dirt before, during and after installation.
- 4.3 Always protect the corners of Magnum Board[®] prior to and during installation.
- 4.4 Do not stack other materials on top of Magnum Board[®].

5.0 PROCEDURE

5.1 Attached hereto.



Magnum Building Products

Magnum Board Short Form Specification



SPECIFICATIONS

This specification covers installation of **Magnum™ Wallboard & Ceiling Board for interior areas both wet and dry.**

NOTE TO SPECIFIER

Detail and specify MAPEI Mapelastic 315 Cement-Based Waterproofing Membrane in all wet areas. MAPEI Liquid-Latex Modified or Polymer -Modified thin-set adhesive mortars may be used to install tiles over Magnum™ board after MAPEI Primer L is applied to the surface of the board. When installing other Magnum™ boards for horizontal installations use either a MAPEI Polymer-modified or Non-Polymer-Modified thin-set beneath the Magnum™ board to fill any voids or imperfections between the substrate and the back of the board. Refer to MAPEI Architectural Details on Page 2 of 2 of this document. MAPEI's product recommendations are covered by MAPEI's 10 year TSIS Best Backed Warranty System located at mapei.com.

Magnum™ WALLBOARD & CEILING BOARD

For use over metal or wood framing, Magnum® Wallboard and Magnum® Ceiling Board is easily installed using either manual or pneumatic (strongly recommended) tools. Magnum® Wallboard and Magnum® Ceiling Board, like all Magnum® Board products are virtually impervious to fire, water, insects; do not feed mold or mildew; are non-toxic; provides dimensional stability even when wet; and an exceptional bonding surface. Because of their smooth and durable surfaces, a level 5 drywall finish can be achieved with little effort. Magnum Board finishes can include painting, interior stucco, brick, tile, wall paper and other finish applications. Tested to ASTM C1186, ASTM C1325 and ASTM C1396 as required by the International Code Council (ICC). For the most current current information on **Magnum™ Board**, visit the website at magnumbp.com.

MAPEI INSTALLATION PRODUCTS

MAPEI Mapelastic 315 Cement-Based Waterproofing Membrane for all wet areas. Prior to installing tile over Magnum™ Board, prime with MAPEI's Primer L. Adhesive materials for installing tiles over primed board shall be either a Liquid-Latex Modified (*Two Component System*) or Polymer-Modified (*Single Component*) thin-set adhesive mortar such as Kerabond/Keralastic System, Granirapid System (*Rapid Setting*), Ultraflex 1, 2, or 3, and Ultraflex RS (*Rapid Setting*). Grouting materials shall be Ultracolor Sanded Grout for joints 1/8" to 1" (3 mm to 2,5 cm); Keracolor S Sanded Grout for joints 1/8" to 5/8" (3mm to 19 mm); Keracolor U Unsanded Grout for joints 1/16" to 1/8" (1,5 to 3 mm); and Opticolor is a non-sag reaction resin for joints 1/16" to 3/8" (1,5 to 10 mm) for both walls and floors.

SUBSTRATE PREPARATION

Prior to installing over the **Magnum™ Wallboard & Ceiling Board**, surface shall be cleaned to remove any contaminants, dirt, dust, etc. Prime board prior to setting the tile with MAPEI Primer L; diluted at a ratio of 1 part Primer L with 1 to 3 parts of clean potable water. Allow to dry before installing the tile.

EXPANSION JOINTS

Shall be installed where any change of plane occurs, or when transitioning in corners, around penetrations, or when transitioning from the wall to the floor. Consult the most current TCNA Handbook (Tile Council of North America) under Detail EJ-171.

INSTALLATION OF WATERPROOFING

MAPEI Mapleastic 315 Waterproofing shall be installed on interior tile installations that are exposed to continuous wet conditions. Consult the most current MAPEI Technical Data Sheet at mapei.com.

SETTING THE TILE

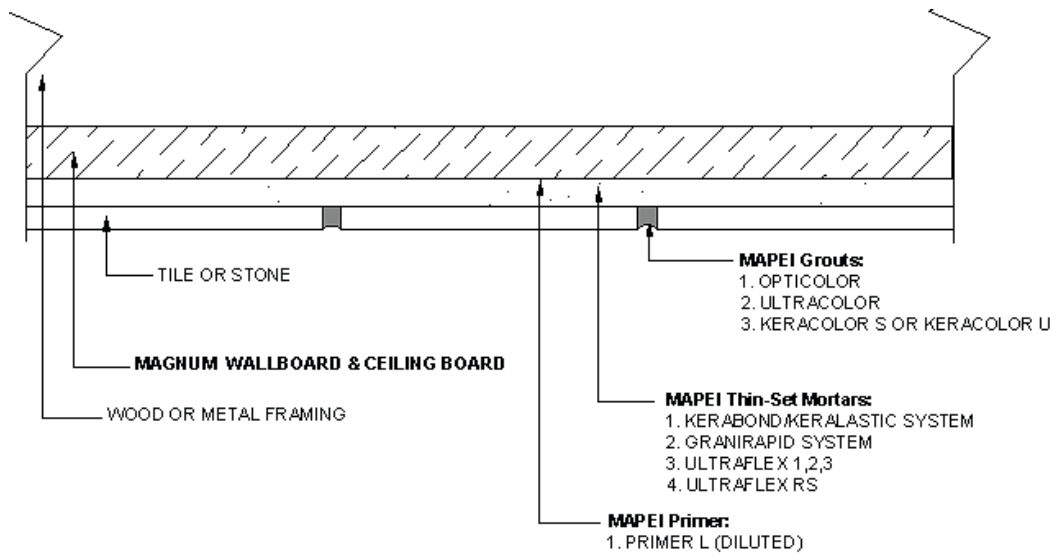
The mortar should be keyed into the Magnum™ board using the flat side of the trowel. Comb the mortar with the notch side of the trowel to ensure proper transfer from the back of the tile to the board. Place tiles firmly into the mortar to achieve 85% to 100% of transfer to the back of the Magnum™ board. To achieve proper bond to board, allow tile and mortar assembly to set up before grouting the tile.

GROUTING THE TILE

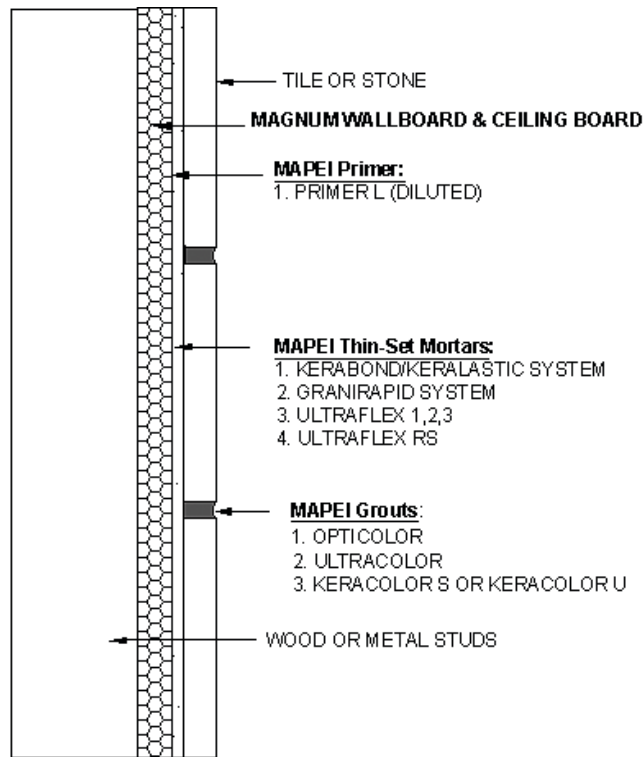
All grout joints shall be packed full and free of voids. Consult the most current MAPEI Technical Data Sheet at mapei.com for either cement-based grouts or epoxy grouts as to the proper installation and cleaning procedures.



MAPEI ARCHITECTURAL DETAIL Fig. 1
Magnum™ Wallboard for interior areas both wet and dry



MAPEI ARCHITECTURAL DETAIL Fig. 2
Magnum™ Ceiling Board for interior areas both wet and dry



For the most current product and warranty data, visit

www.mapei.com



MAPEI Headquarters of the Americas
 1144 East Newport Center Drive
 Deerfield Beach, Florida 33442
 Phone: 1-888-US-MAPEI (1-888-876-2734)

Technical Services
 1-800-992-6273 (U.S. and Puerto Rico)
 1-800-361-9309 (Canada)

Customer Service
 1-800-42-MAPEI (1-800-426-2734)



© 2008 MAPEI Corporation.
 All Rights Reserved.
 Printed in the USA

6.0 REFERENCES

6.1 Magnum Building Products “MSDS

7.0 BUILDING CODES

7.1 Always follow Local, State and Federal Building Codes as applicable.